



4



2



2

PRICE GUIDE: \$550 per week

Stylish | Spacious | Sophisticated

Prepare to be impressed by this young four bedroom brick veneer beauty with two living areas located in the new Brompton Estate. This brand new designer home offers modern and light filled open plan living, well appointed kitchen with a large walk in pantry, stone benchtops, dishwasher and 900mm appliances. The home features a mixture of timber laminate floors and plush carpets throughout.

This home is set to turn heads with the immaculate interior featuring 2.7m ceilings throughout, providing the feeling of space. Four great sized bedrooms with the master suite complete with full ensuite and walk in robe. The additional remaining three bedrooms all host double built in robes and serviced by the family bathroom.

DISCLAIMER: In preparing this information, Absolute Property Management has relied in good faith upon information provided by others and has made all reasonable efforts to ensure that the information is correct. The accuracy of the information provided to you (whether written or verbal) cannot be guaranteed. If y



Elizabeth Alessandrelli
0414602129



Victoria Madeley
0411 171 168

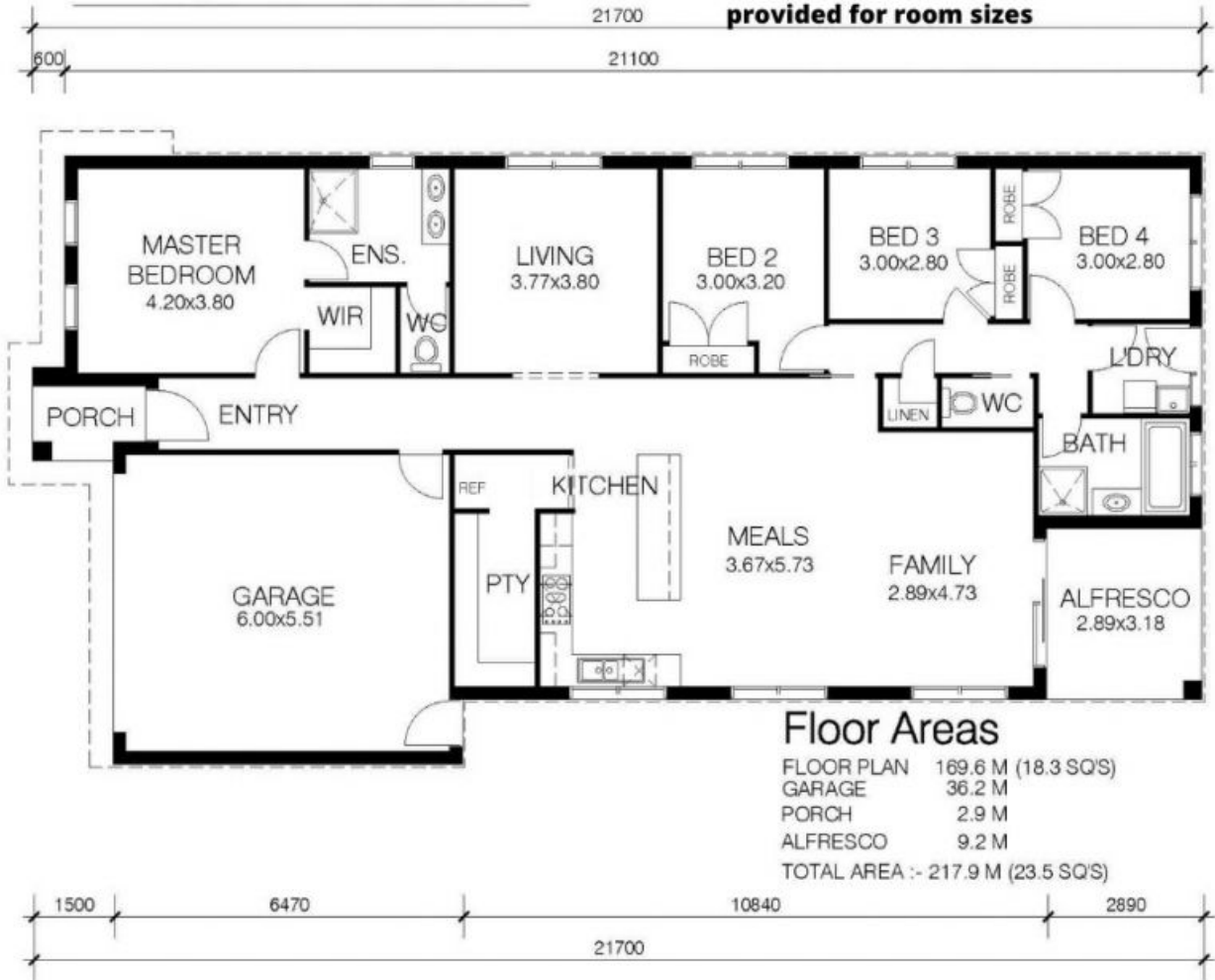


OFFICE

PO BOX 4123, MOUNT ELIZA, VIC

THE BONDI 170

***Floorplan provided is mirrored and provided for room sizes**



OFFICE