



3



2



2

**PRICE GUIDE:** \$500.00 per week

## An idyllic lifestyle awaits

To attend this inspection, you must pre-register. By clicking the "Book Inspection" button you will be notified of all available inspection dates and times plus any changes that may occur.

Offering flowing contemporary spaces this freshly painted three-bedroom home offers a peaceful lifestyle. Naturally lit spaces with updated features promoting a relaxed, airy ambience set a magnificent tone, minutes by car from Seaford Beach, Edithvale Wetlands, specialty shopping and chic cafes.

Inside reveals a pristine light filled interior where there's no shortage of space. Boasting a large lounge room to unwind, flowing through to a brand new spacious kitchen with stainless steel appliances including dishwasher and separate meals area.

Three great sized bedrooms with new carpets await, the main boasts an ensuite bedroom enjoying built-in robes and remaining bedrooms with built in robes, plus split system heating and cooling to these two rooms that also share an immaculate bathroom. Features 3 split system air conditioners, double carport and se



**Elizabeth Alessandrelli**  
0414602129



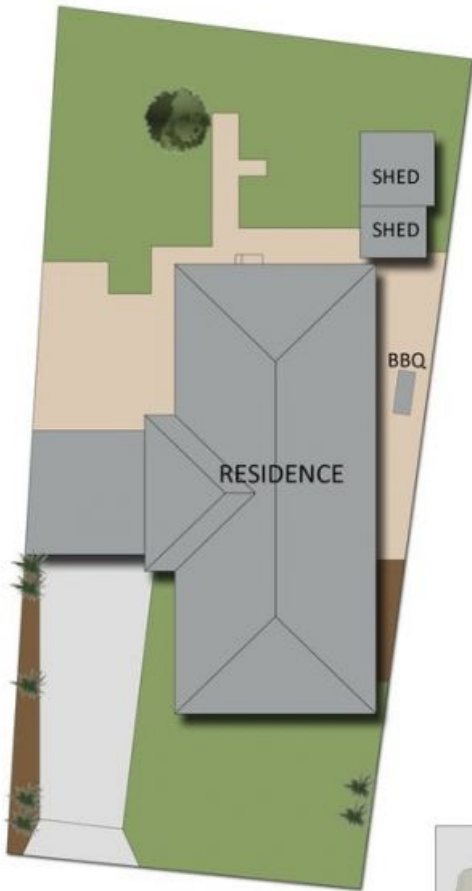
**Victoria Madeley**  
0411 171 168



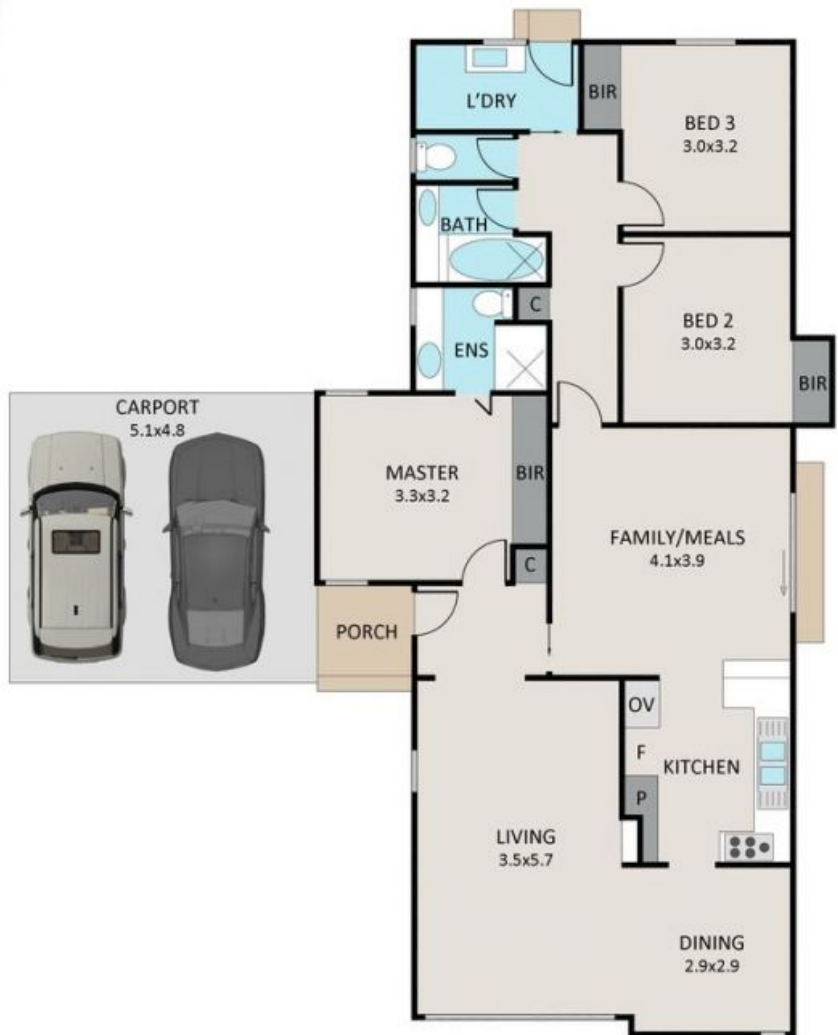
**OFFICE**

PO BOX 4123, MOUNT ELIZA, VIC

# 21 Lucas Crescent, Seaford



siteplan



floorplan

Whilst every attempt has been made to ensure the accuracy of the floor plan contained here, measurements of doors, windows, rooms and any other item are approximate and no responsibility is taken for any error, omission, or misstatement. This plan is for illustrative purposes only and should only be used as such by any prospective purchaser.



OFFICE