



3



1



2

Enviably lifestyle opportunity

To attend this inspection, you must pre-register. By clicking the 'Book Inspection?' button you will be notified of all available inspection dates and times plus any changes that may occur.

Situated in the sought-after McClelland College zone, this charming three bedroom home offers 3 bedrooms. Boasting a range of impressive upgrades and nestled within a tranquil neighbourhood this residence enjoys a privileged location backing directly onto the scenic Lipton Reserve.

Designed for convenience and comfort, this single-level brick home showcases a generous flat lawn, a tandem garage and separate storage room. Step inside to discover sun-drenched interconnecting living and dining areas adorned with light coastal timber floors exuding a bright and welcoming ambiance.

A beautifully renovated kitchen featuring exquisite stone benches and brand new appliances radiates a fresh and contemporary appeal, while down the hall the three bedrooms are serviced by the fully renovated bathroom with fl



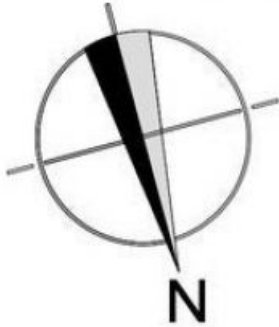
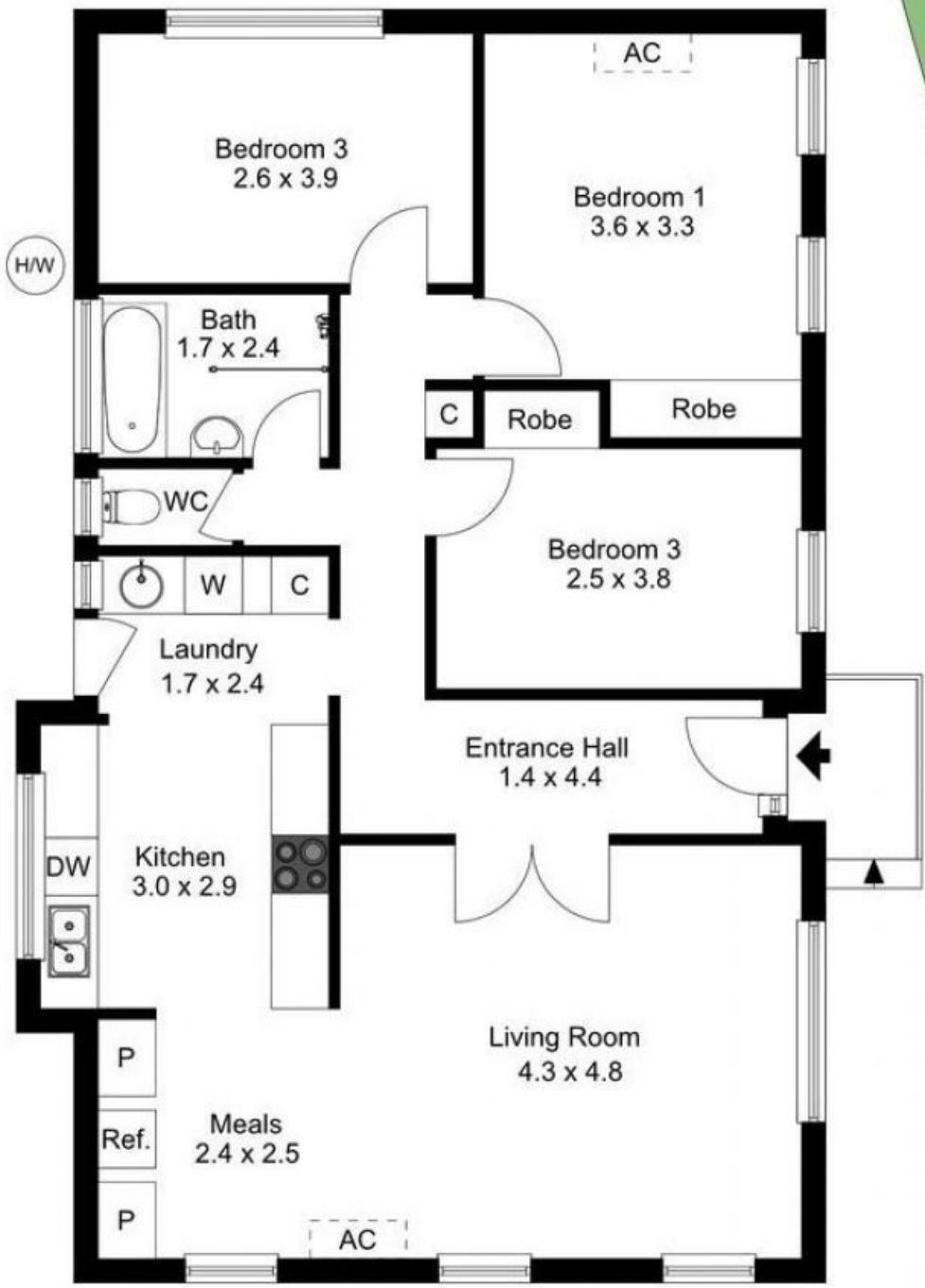
Victoria Odell
0411 171 168

Elizabeth Alessandrello
0414602129



OFFICE

PO BOX 4123, MOUNT ELIZA, VIC



The site plan and floor plan are not to scale; measurements are in metres. Bushes and trees are placed for illustration

OFFICE