



4



2



2

Woodland Wonder

To attend this inspection, you must pre-register. By clicking the 'Book Inspection?' button you will be notified of all available inspection dates and times plus any changes that may occur.

Meticulously presented, you will instantly fall in love with the stunning setting and family oasis located in the highly desirable Woodlands Estate. Hidden from the street, this tranquil 4-bedroom, 2-bathroom residence is nestled at the end of a long private driveway, amongst gorgeous established gardens and spectacular bush vistas. Set on a massive 2702m2 (approx) parcel of land, privacy and space is guaranteed, offering a relaxed and secluded lifestyle.

The spacious living is warmed by an enclosed wood fire, perfect for the cold winter's nights and an ideal parent retreat, while the modern kitchen with stone benches rests at the centre of the home with butler's pantry/laundry, beside the fantastic meals area and adjoining study nook. The highlight of the home is the brilliant masterful extension, offering a grand family room, with an inbuilt gas log

Victoria Odell

0411 171 168



OFFICE

PO BOX 4123, MOUNT ELIZA, VIC



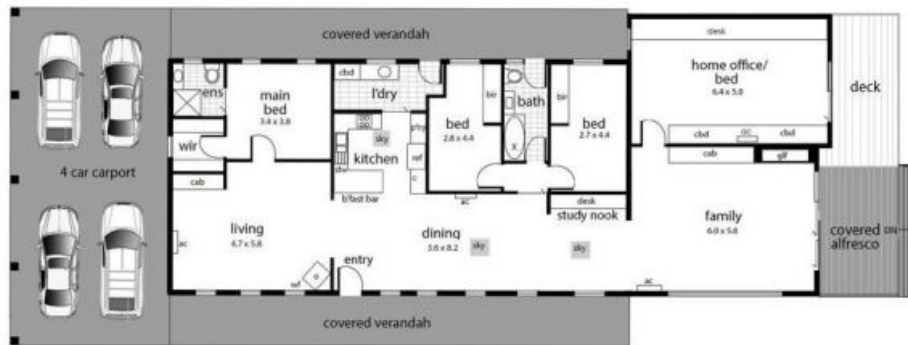
Internal living area
approx: 24 squares

Verandah, deck
and alfresco area
approx: 9 squares

Carport area
approx: 7 squares

Total area
approx: 40 squares

Land area
approx: 2702 sqm



74 Winona Road, Mount Eliza

Produced by DND Floorplans

This floorplan is a guide only and no warranty is given to its accuracy in dimensions. Purchasers are advised to carry out their own investigations.



OFFICE